



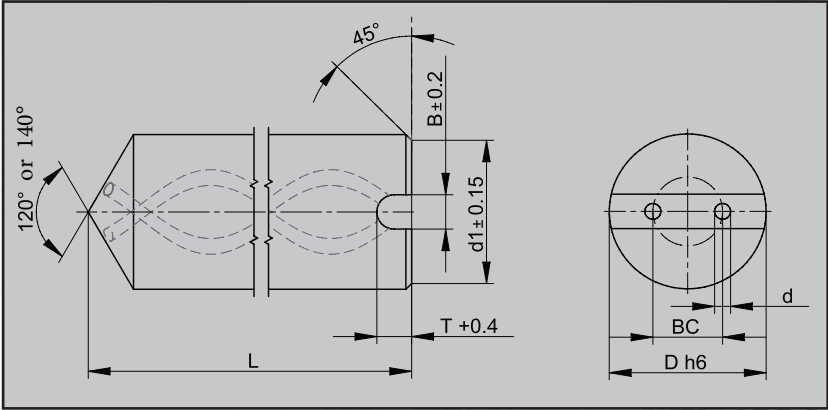
h6 ground drill blanks | 2 hole 30° helix coolant ducts | 120° or 140° point | chamfered & slotted back-end

**READY2RUN** blanks are pre-ground and cut to length, ready for flute and geometry grinding.

Item No.	Dia.	OAL	
7915 006.000	6.00 mm	67.00 mm	3xD
7915 006.001	6.00 mm	67.00 mm	
7915 006.002	6.00 mm	63.00 mm	
7915 008.000	8.00 mm	80.50 mm	
7915 010.000	10.00 mm	90.50 mm	
7915 012.000	12.00 mm	104.00 mm	
7915 014.000	14.00 mm	109.00 mm	
7915 016.000	16.00 mm	117.50 mm	
7915 018.000	18.00 mm	125.50 mm	
7915 020.000	20.00 mm	134.00 mm	
7916 006.000	6.00 mm	83.00 mm	5xD
7916 008.000	8.00 mm	92.50 mm	
7916 010.000	10.00 mm	104.50 mm	
7916 012.000	12.00 mm	120.00 mm	
7916 014.000	14.00 mm	126.00 mm	
7916 016.000	16.00 mm	135.50 mm	
7916 018.000	18.00 mm	145.50 mm	
7916 020.000	20.00 mm	156.00 mm	
7349 006.002	6.00 mm	76.00 mm	7xD
7349 006.000	6.00 mm	98.00 mm	
7349 008.000	8.00 mm	107.50 mm	
7349 008.001	8.00 mm	117.50 mm	
7349 010.000	10.00 mm	132.50 mm	
7349 012.000	12.00 mm	157.00 mm	
7349 014.000	14.00 mm	184.00 mm	
7349 016.000	16.00 mm	206.50 mm	
7349 018.000	18.00 mm	225.50 mm	
7349 020.000	20.00 mm	247.00 mm	

Carbide Grade	GC100S	
Classification	K30-K40	
Co	%	10.0
WC incl. doping	%	90.0
Hardness HV30 (± 50)	kg/mm <sup>2</sup>	1580
Fracture toughness K1C	MPa · m <sup>1/2</sup>	11.0
Transverse rupt. strength	N/mm <sup>2</sup>	4100

- 3xD | 5xD | 7xD**
- 2 Coolant Ducts
  - Chamfered End
  - h6 Ground
  - GC100S



Our team looks forward to your inquiries:

- [sales@ultracarbide.com](mailto:sales@ultracarbide.com)
- [www.ultracarbide.com](http://www.ultracarbide.com)
- +1(248) 446-1744

# READY2RUN

## MILLING BLANKS

**READY2RUN** blanks are pre-ground and cut to length, ready for flute and geometry grinding.

- ✓ h6 ground milling blanks
- ✓ axial and lateral coolant ducts
- ✓ chamfered on one end



### 7923

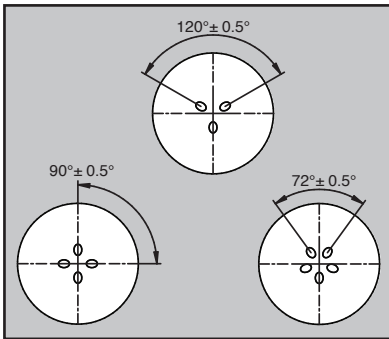
- 3 Coolant Ducts
- Chamfered End
- h6 Ground
- GC100S

### 7924

- 4 Coolant Ducts
- Chamfered End
- h6 Ground
- GC100S

### 7925

- 5 Coolant Ducts
- Chamfered End
- h6 Ground
- GC100S

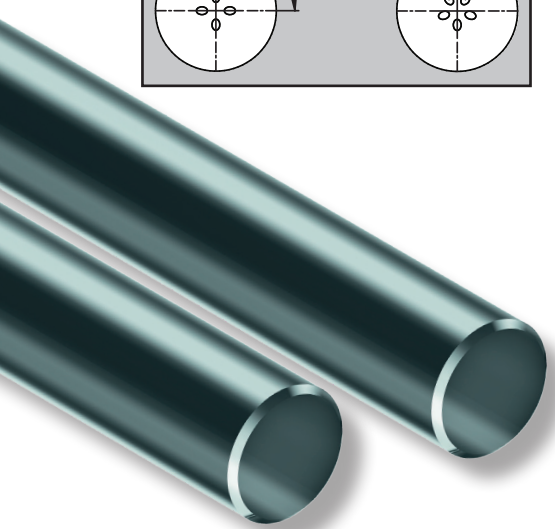


### 7540

- Metric Solid
- Chamfered End
- h6 Ground
- GC100S

### 7864

- Inch Solid
- Chamfered End
- h6 Ground
- GC100SN



Carbide Grade	GC100S	GC100SN
Classification	K30-K40	K20-K40
Co	10.0	10.0
WC incl. doping	90.0	90.0
Hardness HV30 (± 50)	1620	1580
Fracture toughness K1C	10.6	11.0
Transverse rupt. strength	4100	4100

**ULTRA**  
CARBIDE